

SHERIFF OFFICE Surplus Inventory

- 1) Adding machine Canon Mod: MP41DH11 Ser: 20221983
- 2) GE Atlinks desk phone Ser#: 00391401
- 3) HP Laser jet 3015 Fax Machine Mod#: Q2669A Ser#: CNBM239901
- 4) EVOLIS CARD PRINTER W/CORD /POWER SUPPLY MOD: DUALYS SER#: D42015429
- 5) HP PHOTOSMART D7360 MOD: Q7057D SER#: MY696G92MC BROWN CO PROP#3239
- 6) HP LASERJET 400 SER#: CND8F71809
- 7) DELL LAPTOP DOCKING STATION SER# CN-OPW395-73901
- 8) SIX COMPUTER MONITOR STANDS
- 9) DELL MONITOR SER#: MX-032DVX-47605189-A4N2 MOD:1503FP
- 10) DELL MONITOR SER#: CN-0C552H-72872-1708FP1 MOD# 89J-1UWS
- 11) ACER MONITOR SER#: ETLAE0402-1732042044310 MOD #: P221W
- 12) VIEW SONIC MONITOR SER#: 4D3162043026 MOD#: VS16162
- 13) DELL CPU SER#: 3K86T81 MOD: DMC BROWN CO PROP 1493
- 14) UNK CPU MAKE SER#: 16278052900132 BROWN CO PROP 1505
- 15) DELL CPU SER#: FTX7P71 MOD: DMC BROWN CO PROP 1487
- 16) DELL CPU SER#: 1K86T81 MOD DMC BROWN CO PROP 1486
- 17) DELL CPU SER#: 4VZH91 MOD: MULTIMEDIA 5150 BROWN CO PROP 1490

February 14, 2022  
(Exhibit #4)

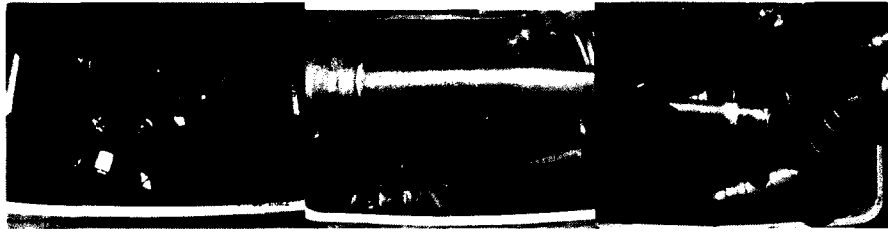
TRANSPORT OFFICE CPU'S FOR SURPLUS

- 1) DELL CPU BCPROP#: 1894 SERIAL #: 97Y4PLI
- 2) DELL CPU BCPROP#: 1893 SERIAL #: 9BX6PLI
- 3) DELL CPU BCPROP#: 1895 SERIAL #: 8XHMP LI

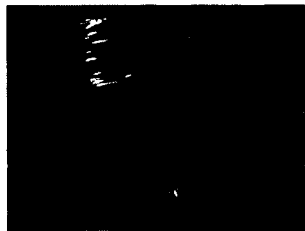
CONSIDERED SURPLUS WITH THE LIST FROM 01-27-22 THOMPSON .

Request to recycle scrap metal

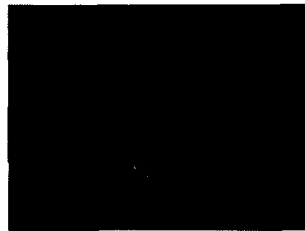
Used copper plumbing scraps



Stainless steel trays



20 t.v. shelves



Obsolete & broken warming table and dishwasher

